

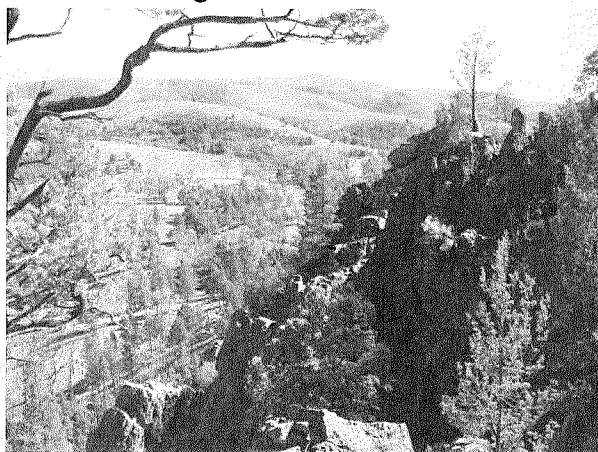
# The Warren Gorge Walking Trail

**T**HIS IS A Flinders Ranges Council Trail designed especially for campers with little or no hiking experience, and not wanting a long hike. It's ideal for Quorn people wanting a short and not too difficult walk.

It's only a 5.2 km circuit. That means wherever along it you begin hiking, you'll return to the same point. And it isn't very steep. But it *is* better to walk it clockwise.

One advantage walkers love is that they can take dogs with them, though only on leashes. (The *State's* Parks don't allow dogs at all.)

Warren Gorge itself runs through the Front Range. The Trail goes from the Car Park at the Gorge's entrance, across the road and a little above it. It recrosses the road at the other end of the Gorge.



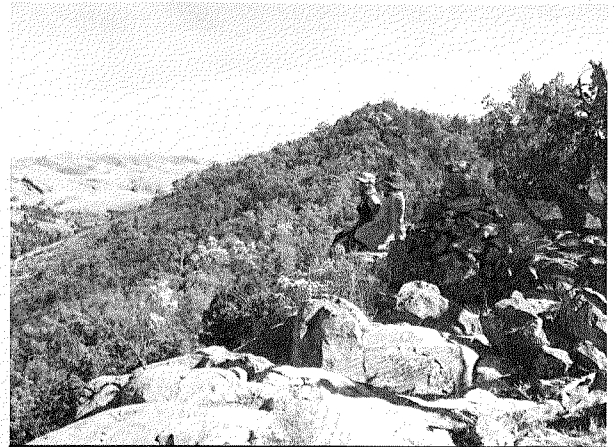
Views from the top of the Front Range are spectacular. This view is over the campsite. Mt Arden is the highest peak on the horizon near its centre.

Then it goes through the campsite along the Front Range's western side, and then up to a Checkpoint on a watershed. It turns back and gradually climbs to a low saddle in the Front Range where there are a cairn and a visitors' book.

Ninety metres further down the eastern side of the Front Range is a turn-off up to Smoke-Oh Lookout. The views are spectacular from here. Two hundred metres further you come to a turn-off to more views from Lookout Rocks, including of Mt Benjamin.

The Trail continues, gradually descending back to the Car Park. Walkers usually take

between 1½ and three hours. But your time will depend on how long you stop for rests.



At the cairn on Smoke-Oh Lookout, looking north-west. The Visitors Book is not here, but is back at the saddle.

The Trail is well marked. There are white markers within sight of one another through the open forest, and steel pole markers every 200 metres showing how far you've come.

Many of the campers are so delighted with the Trail that they walk it twice or even three times. They often like to walk it in the opposite direction for their second time.

What fascinates them is the great variety of scenery the trail goes through. It includes gum tree-lined creek beds, pine forest, a spinifex-covered hill, rocky mountaintops, and bush.

From Quorn to the Car Park at the entrance to the Gorge is around 23 km. If you walk quietly late in the afternoon you're likely to get close to Yellow-footed Rock Wallabies.

There's a colour photo on the back page of this *Mercury* of the Wattle Grove in flower, just to the west of the cairned saddle. ■



The view the other side of Smoke-Oh Lookout along Arden Vale to Wilpena Pound on the horizon.

# Warren Gorge Walking Trail Map

